
STORMWATER SOLUTIONS / STORAGE / CHAMBERS
HydroStor™

When it comes to stormwater chambers, the road from good to great leads directly to HydroStor, the industry's highest performing chambers. They meet or exceed proven ASTM structural, design and product standards, while including features that matter to the designer and installer.


HydroStor™ HS180


180 ft ³ /chamber	Installed Storage Capacity*	75 ft ³ /chamber
45.5"	Height	30"
77.8"	Width	51"
88.7"	Unit Length	87.1"
85.3"	Installed Length	84.9"
127 lbs	Weight	70 lbs
17	Chambers/Pallet	33
Polypropylene	Material	Polypropylene
Injection Molding	Mfg. Process	Injection Molding
Integrated Handle	Special Features	Integrated Handles
Meets or Exceeds	ASTM Standards	Meets or Exceeds


HydroStor™ HS75


* Assuming 40% void volume of backfill with 9" bedding & 12" cover for HS180 and 6" bedding & 6" cover for HS75

Performance

- High performance polypropylene material
- Meets or exceeds **ASTM F2418-12** product standard & **ASTM F2787-13** design standard
- Meets **AASHTO H20** live load & **HL93** design load requirements
- Advanced injection molding technology for maximum structural performance

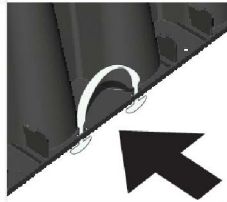
System Design

- Maximum land utilization & minimal environmental impact
- Smaller footprint with lower installed cost than similar chambers
- Features integral connectors for simplified assembly
- Design tool available at Prinsco.com/HydroStor-Resources
- Available as part of a complete solution with end caps, pipe manifolds & pretreatment options

Handling

- Integrated Handles for safe on-site handling
- Specially designed pallet for trouble free handling
- Sturdy and lightweight for safe transport and placement by 2 people
- Maximum stacking density to reduce on-site staging footprint

Integrated Handles



Easy to Handle

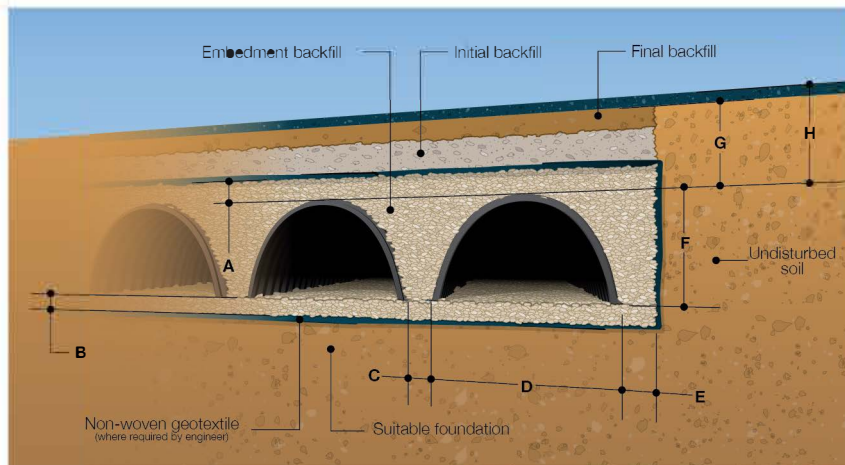


Reinforced Pallet*



* minimum 72" forks required

Installation Specifications



HS180

12" minimum

A backfill above chamber

9" minimum

B bedding

8"

C chamber spacing

78"

D chamber width

12"

E backfill at edge of system

45.5"

F chamber height

23.5"

G minimum cover

8'

H maximum burial depth

HS75

6" minimum

6" minimum

6"

51"

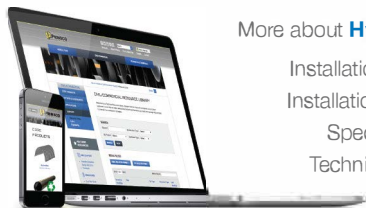
12"

30"

18"

8'

MOBILE RESOURCES



More about **HydroStor™**

- Installation Videos
- Installation Guides
- Specifications
- Technical Notes



Prinsco.com/HydroStor-Resources

ENGINEERED WITH INTEGRITY

Prinsco products are fully supported by our engineering team and are designed, manufactured and tested to meet/exceed the high performance needs of the construction market. Prinsco's engineering, quality control and production teams are committed to a continuous process of innovation, product development and quality improvement. We are focused on environmental sustainability, water quality, stormwater management and performance advancement.

COLLECTION & CONVEYANCE



GOLDFLO WT®
AASHTO Dual-Wall Pipe

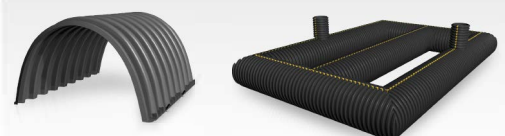
ECOFLO® 100
High Performance Recycled Dual-Wall Pipe

TREATMENT



STORMWATER QUALITY
Water Treatment

STORAGE



HYDROSTOR™
High Performance Arched Chambers

UNDERGROUND DETENTION
Customized High Performance Pipe Systems